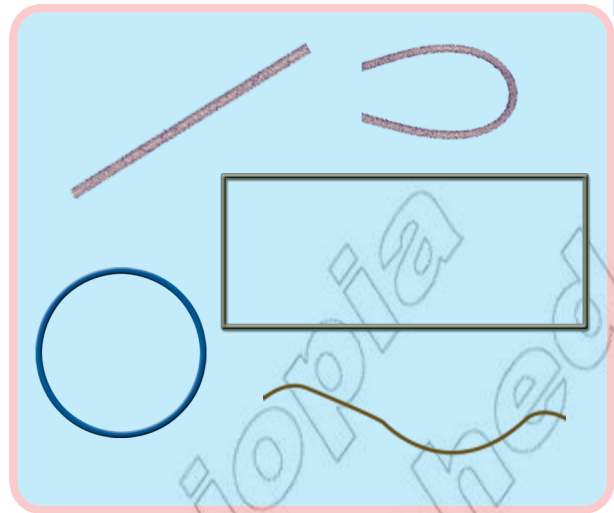


ምዕራፍ ሸሞንተ

መስመርን ቀለልቲ ቅርፅታትን



8.1. ቅኑፅን ልዋይን መስመር

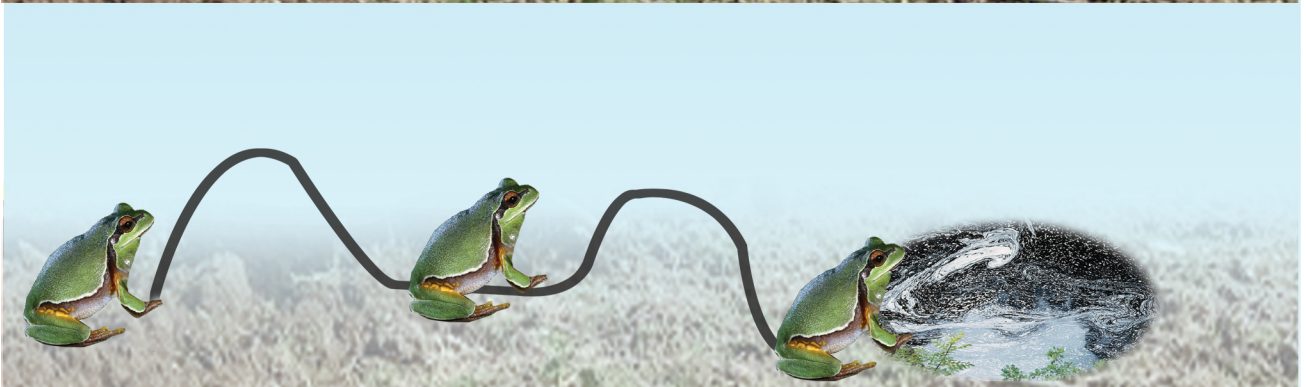
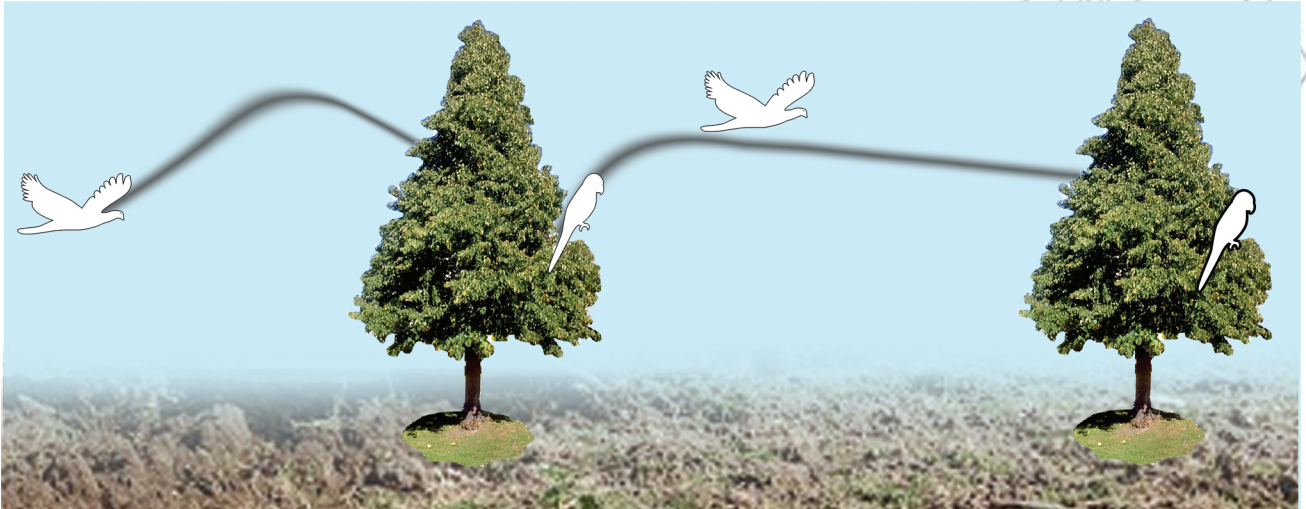
ንጥፈት 1 ነዘም ምስልታት ብምርኣይ ቅኑፅን ልዋይን መስመር ፍለዩ።



ሀ.			
ለ.			
ሐ.			
መ.			
ረ.			



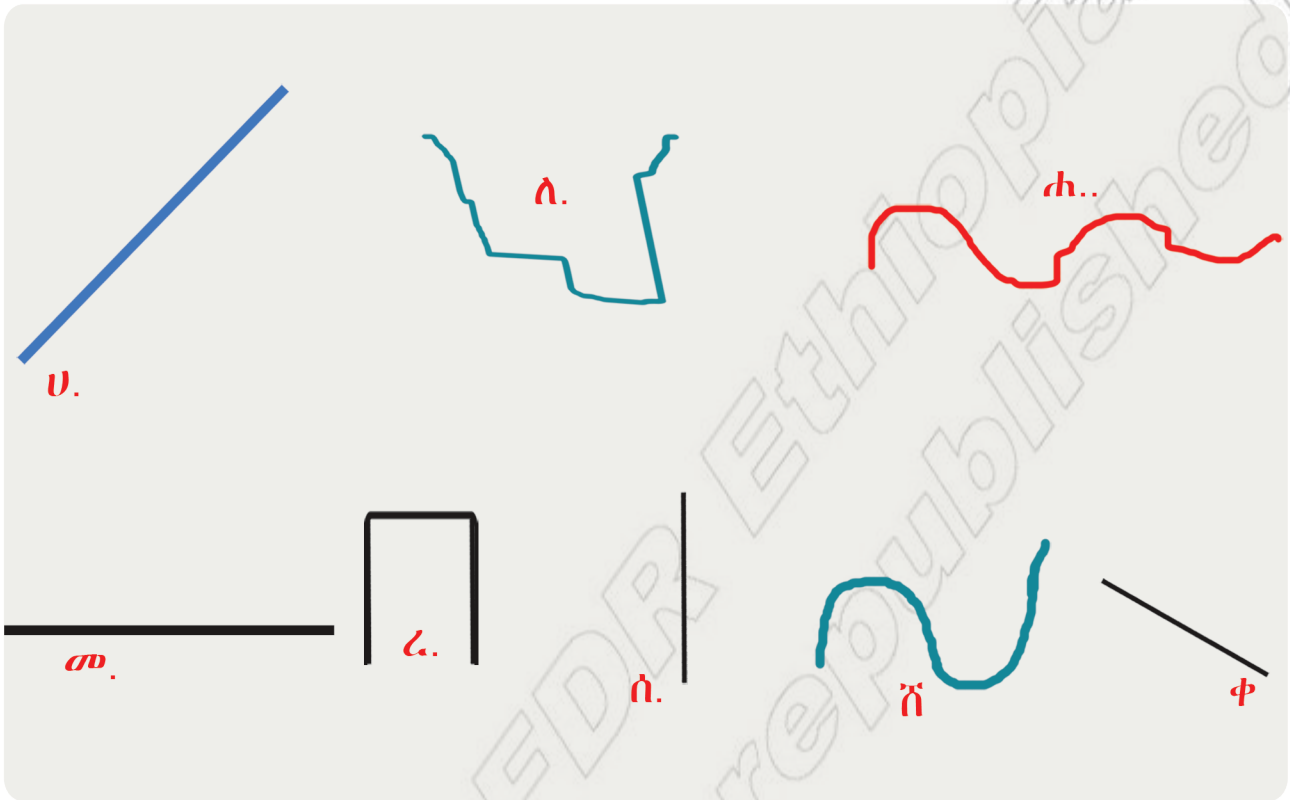
ንጥፈት 2 ቅነሶን ልዋይን ዝኾኑ መንገድታት ፍለዩ።





መልመዳ 1

ቅኑዕ ወይ ድማ ልዋይ መስመር ፈ.ሊ.ኸ-ም ፊደሎም ፅሓፉ።



ቅኑዕ መስመር ዝኾኑ

ሀ

ልዋይ መስመር ዝኾኑ

ለ



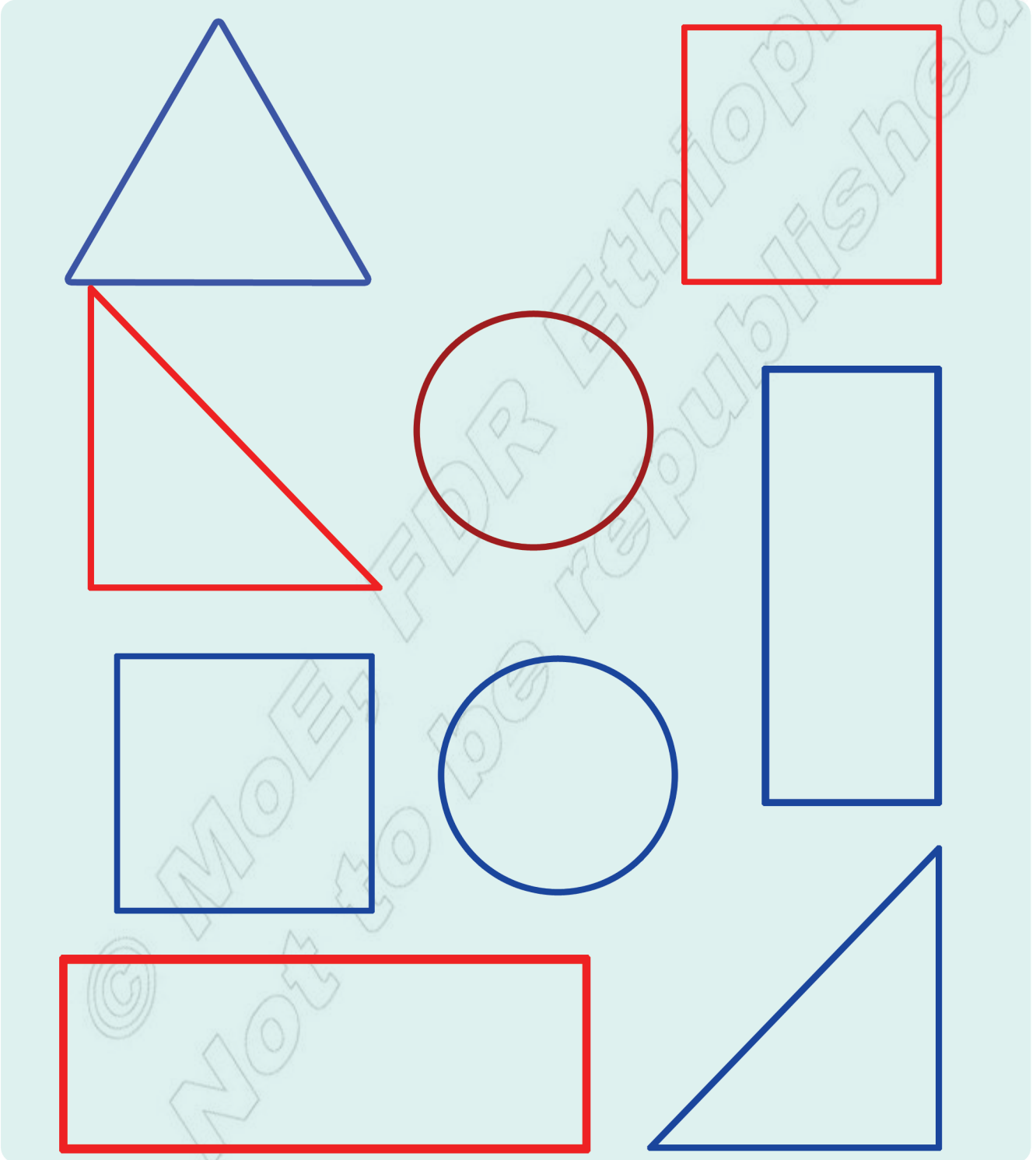
መልመዳ 2 ደንምኩም ስካሉ።

ሀ. 		
ለ. 		
ሐ. 		
መ. 		
ሰ. 		
ረ. 		
ሸ. 		
ቆ. 		



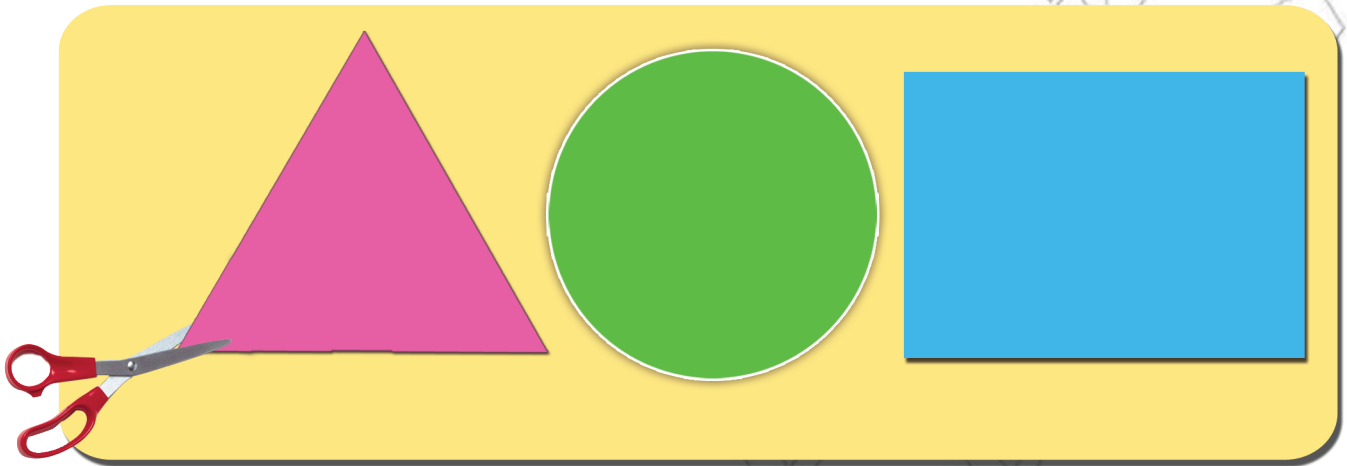
8.2 ቀለልተኛ ቅርፅታት

ንጥፈት 3 ዓይነታት ምስሊ ፍለዩ።

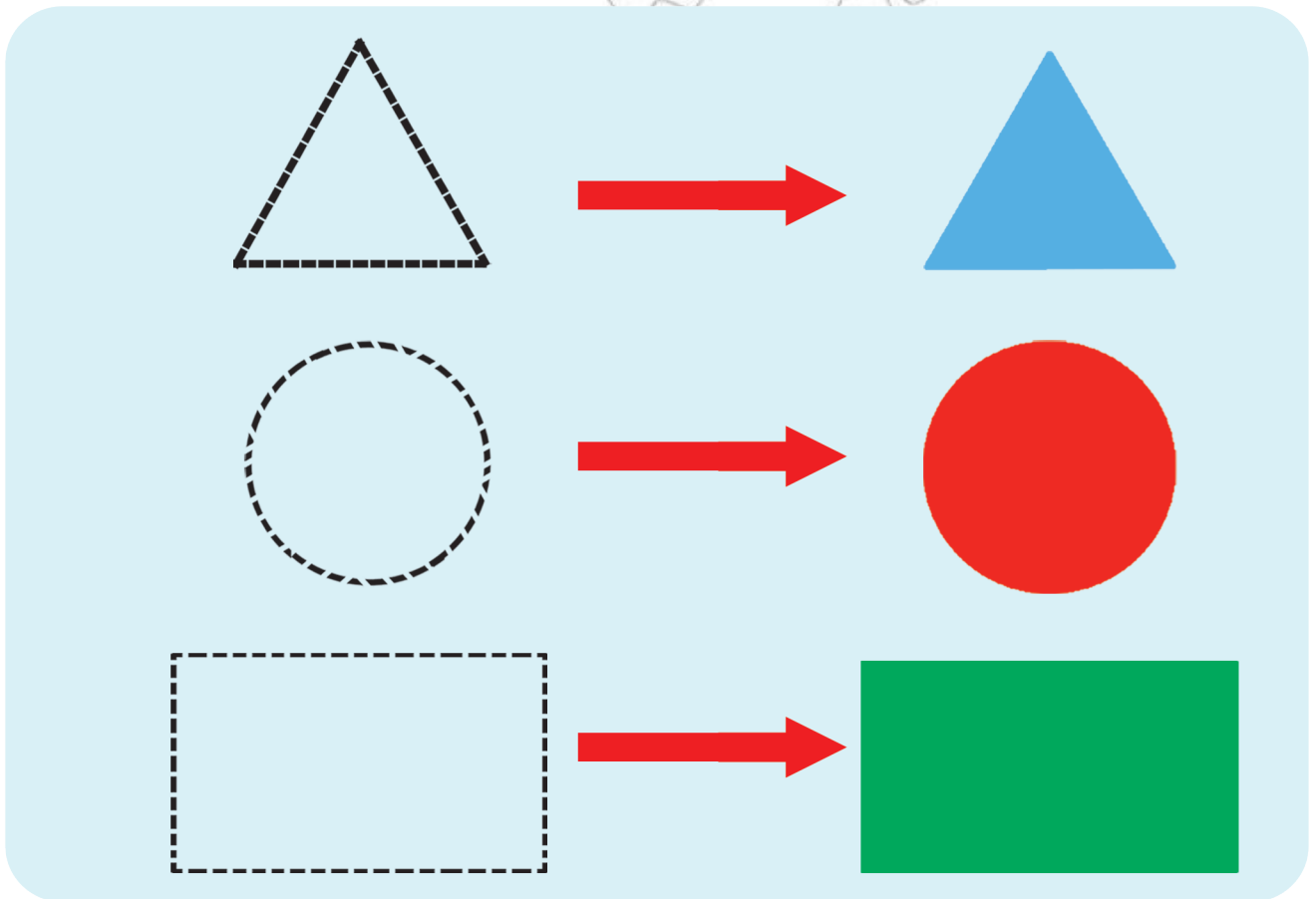




ንጥፈት 4 ኣብ ከባቢኹም ብዘለዉ ነገራት ተጠቂምኩም ነዞም ምስልታት ስርሒቡ።

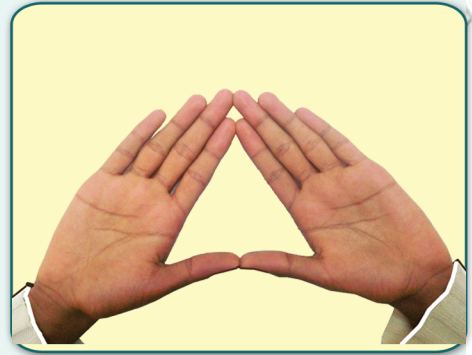
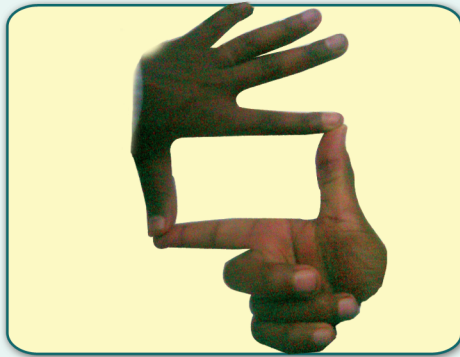
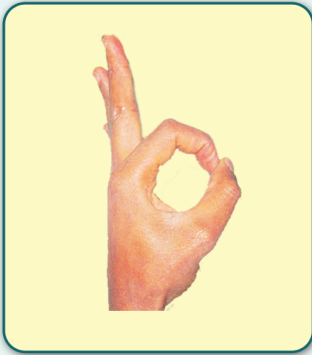


መልመዲ 3 ነዞም ምስልታት ኣብ ደፍተርኩም ስኣሉ።

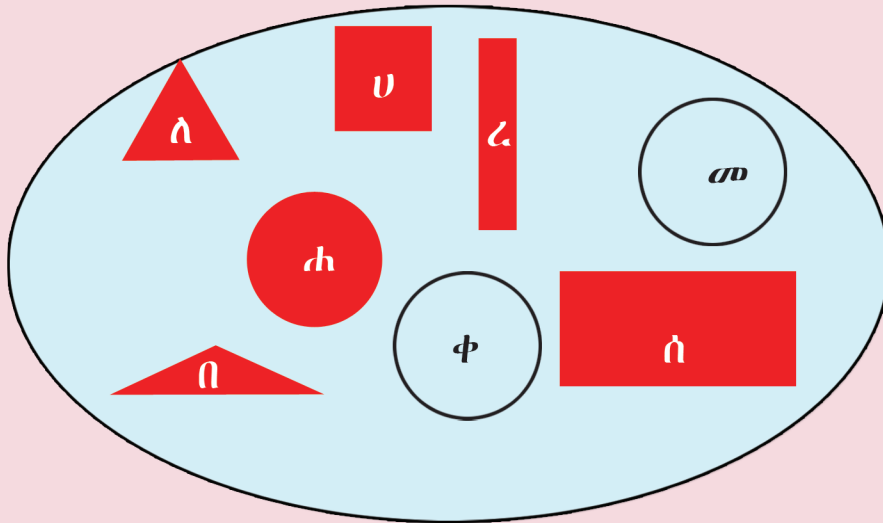




ንጥፈት 5 በዞም ኣፃብዕቲ ዝተሰርሑ ምስልታት ስሞም ግለፁ።



ንጥፈት 6 ነዞም ምስልታት በቢ ዓይነቶም ፍለዩ።



ስሉስ ኩርናዕ

አ

ርቡዕ ኩርናዕ

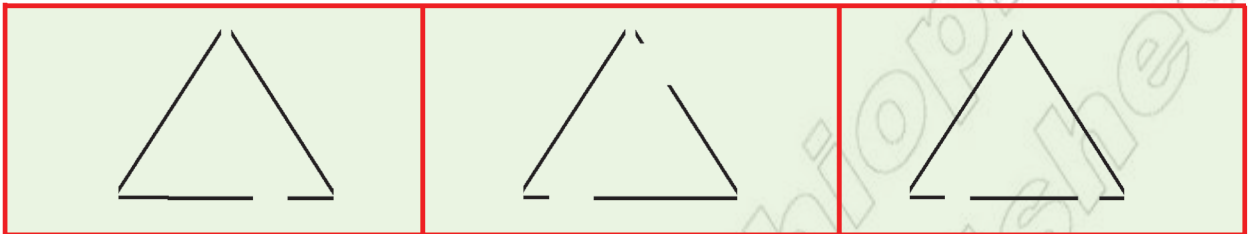
ክቢ



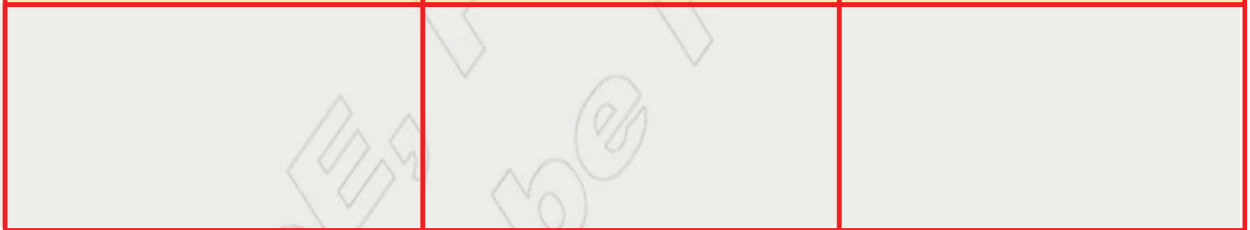
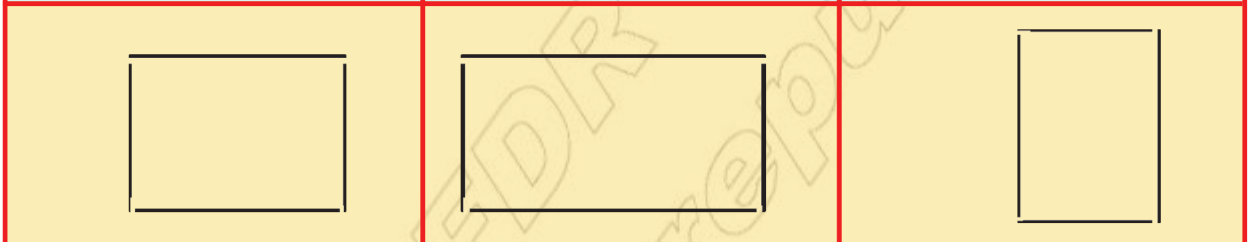
መልመዳ 4

ነዘም መስመራት ብምርኅብ ስለ-ስ ኩርናዕ፣ ርቡዕ ኩርናዕን ክብን ስኣሉ።

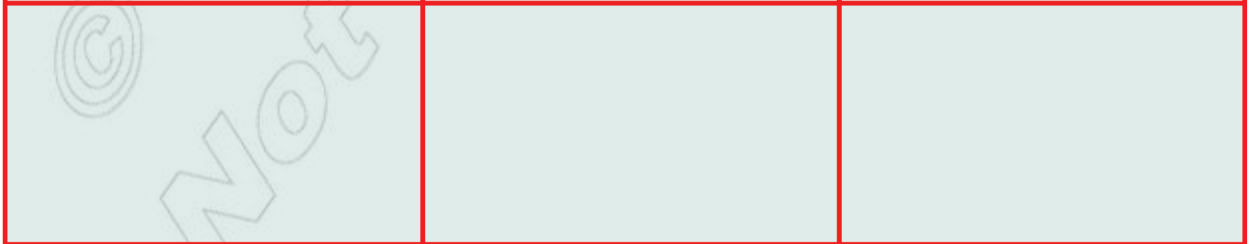
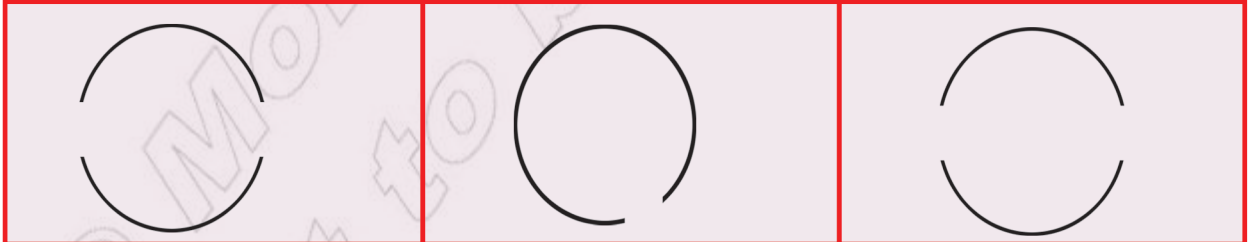
ሀ.



ለ.

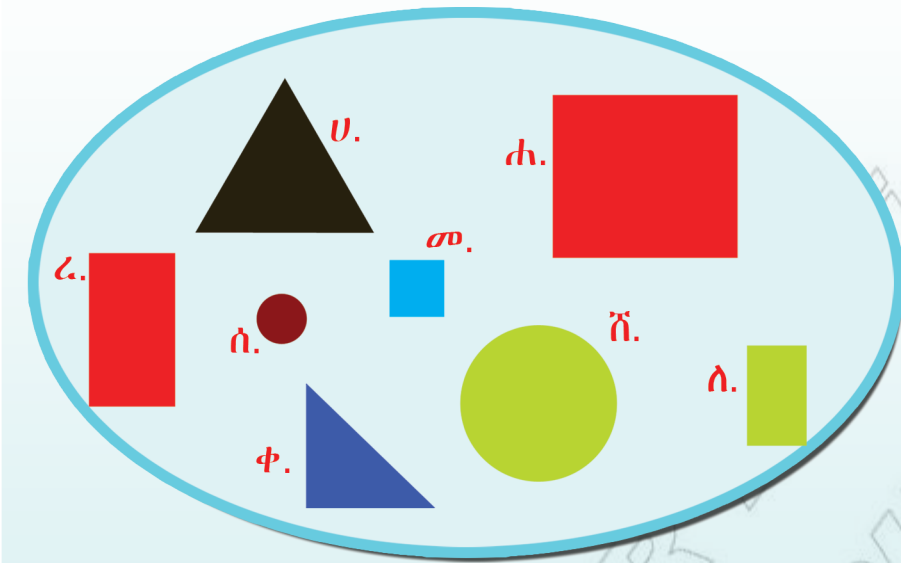


ሐ.





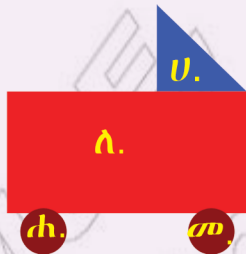
ንጥራት 7 ስም ሕድሕድ ምስሊ ፅሓፉ።



- ሀ. ስለ-ስ ኩርናዕ
- ለ. ርቡ-ዕ ኩርናዕ
- ሐ. _____
- መ. _____
- ረ. _____
- ሰ. _____
- ሸ. _____
- ቀ. _____

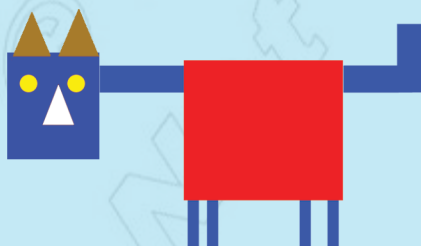
መልመዳ 5

1. ስም ሕድሕድ ፊደላት ዝወክሉ ምስልታት ፅሓፉ።



- ሀ. ስለ-ስ ኩርናዕ _____
- ለ. _____
- ሐ. _____
- መ. _____

2. በዝሐ ምስልታት ፅሓፉ።



- ኣብቲ ምስሊ ክንደይ ክብታት ኣለዉ? _____
- ክንደይ ስለ-ስ ኩርናዓት ኣለዉ? _____
- ክንደይ ርቡ-ዕ ኩርናዓት ኣለዉ? _____