

ምዕራፍ

8



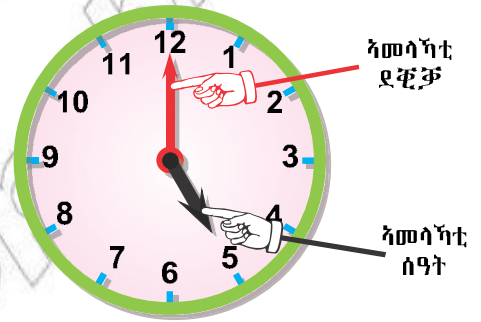
ግዜ

8.1 ምዕዋዕ ግዜ ብፍርቂን ብርብዒን ሰዓት

ብዮማን ዘሎ ምስሊ ሰዓት እዩ።

ኣብቲ ሰዓት ክልተ ኣመላኻት ከንግታት ኣለዉ።

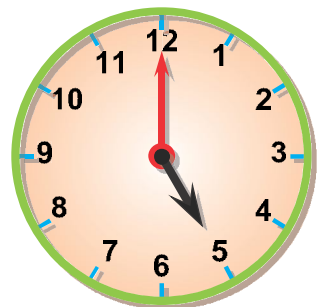
- እቲ ነዊሕ ኣመላኻት ደቂቓ እዩ።
- እቲ ሓዲር ደማ ኣመላኻት ሰዓት እዩ።



ኣመላኻት ደቂቓ (እቲ ነዊሕ) ኣብ 12 እንተ ኣመላኻቲ፣ ኣመላኻት ሰዓት (እቲ ሓዲር) ዝዓርፈሉ ቁፅሪ ክንደይ ሰዓት ከምዝኾነ ይነግረና።

ኣብነት 1

ኣብቲ ምስሊ ኣመላኻት ደቂቓ ኣብ 12፣ ኣመላኻት ሰዓት ደማ ኣብ 5 እንትዓርፉ ዝገልፁዎ 5 ሰዓት ምዃኑ እዩ።



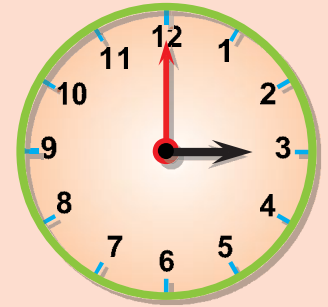
እዚ እንትንበብ ሰዓት ሓመ-ሸተ እንትፅሓፍ ደማ እዩ።

5 . 00

ሰዓት ደቂቓ

ንጥፈት 1

ኣብቲ ስእሊ ሰዓት ክንደይ ይገባብ?



እንትገባብ

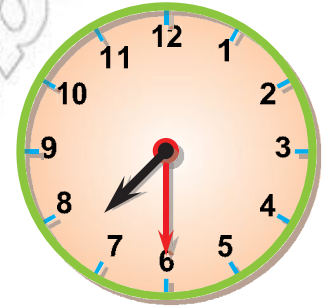
እንትፅሓፍ

ኣመሳካቲ ደቂቓ (እቲ ነዊሕ) ኣብ 6 እንተመሳኸት ፍርዊ ሰዓት ከምዘኾነ ይሕብር።

ኣብነት 2

ኣብቲ ስእሊ እንትንርኢ እቲ ነዊሕ ኣብ 6 እቲ ሓፂር ድማ ኣብ ሕላፍ 7 የመላኽቱ።

እዚ ዘመላኽቶ ሰዓት ብንባብን ብፅሑፍን ግለፁ?

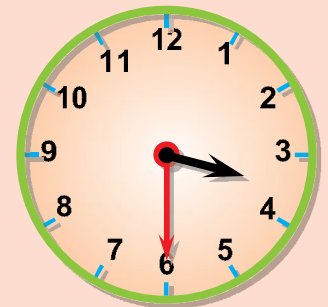


እንትገባብ ሰዓት ሸውዓተን ፈረቓን

እንትፅሓፍ

ንጥፈት 2

ሰዓት ክንደይ ኾይኑ?



እንትገባብ

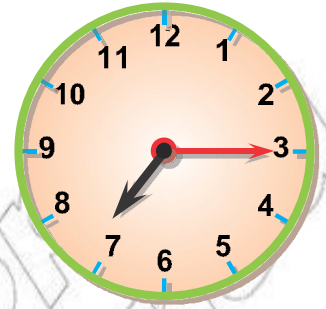
እንትፅሓፍ

ኣመሳካቲ ደቂቓ (እቲ ነዊሕ) ኣብ 3 እንተመሳኸት ርብዒ ሰዓት ከምዘኾነ ይሕብር።

ክፍል 3

እኔ ነዊሕ አብ 3 አመላኽቼ እኔ ሐፂር ሕላፍ 7 የመላኽት።

እዚ ዘመላኽቶ ሰዓት ብንባብን ብፅሑፍን ግለፁ?

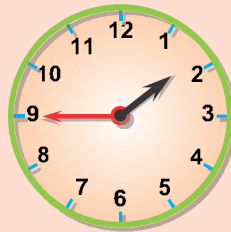


እንትንባብ ሰዓት ሸውዓተን ርብዒን

እንትፅሑፍ 7:15

ንጥፈት 3

እኔ ስእሊ ተምሃሮ መዝሙር ህዝቢ ኢትዮጵያ ክዝምሩ ዝዳለዉሉ እዩ። ክንደይ ሰዓት ኾይኑ?



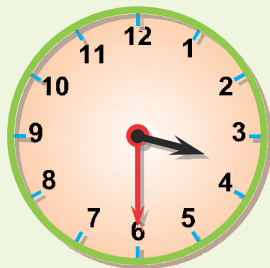
እንትንባብ

እንትፅሑፍ

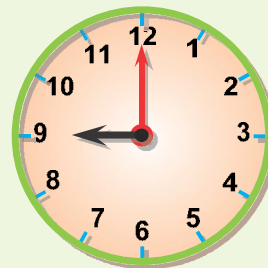
መጠመዲ 1

1. ኣብቲ ምስሊ ዝተሓበረ ሰዓት ተዛረቡ።

ሀ.



ለ.



ሐ.





መ.



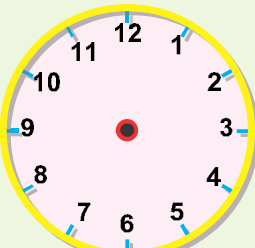
ምዕራፍ 8 ግዜ

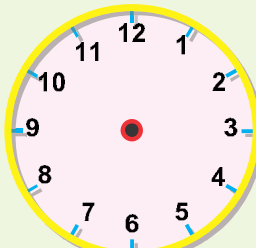
2. ብዩሚን ገፅ ካብ ዘተወሃቡ መማሪፅታት ትክክሰኛ መልሲ ኣክብቡ።

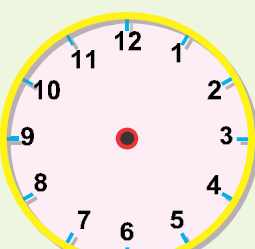
ሀ.  12:15
7:30
7:00

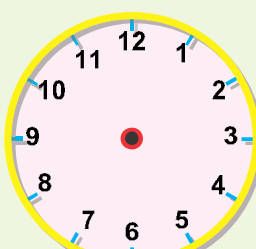
ለ.  3:15
5:15
5:30

3. ነቲ ተገሲፁ ዘሎ ሰዓት ኣብቲ ምስሲ ኣርእዩ።

ሀ. 5:00 

ለ. 2:15 

ሐ. 11:00 

መ. 8:30 

8.2 ሰዓትን ደቂቓን

ሰዓትን ደቂቓን መዐቀንታት ግዜ እዮም።

1 ሰዓት = 60 ደቂቓ እዩ።

ፍርቂ ሰዓት = 30 ደቂቓ (1/2 ሰዓት) እዩ።

ርብዓ ሰዓት = 15 ደቂቓ (1/4 ሰዓት) እዩ።

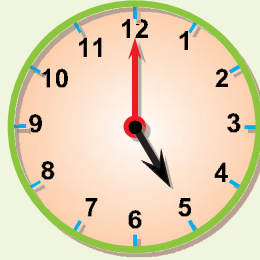


መጠሪያ ቤቅ 2

1. ጊዜዎች::

1. 5:15

ሀ.



2. 7:30

ለ.



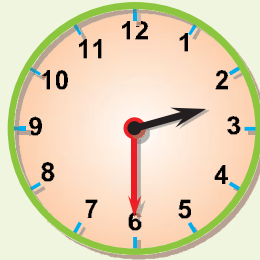
3. 5:00

ሐ.



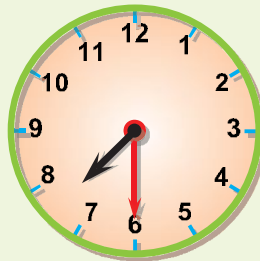
4. 11:15

መ.



5. 2:30

ረ.



ዕድ ገጅስ

ተምሃሮ እዞም ዘስዕቡ ተግባራት ዝትግብሩሎ ሰዓት ይዛረቡ።

- ካብ ድቃሶም ዝትስኡሉ ሰዓት _____ እዩ።
- ገፆም ተሓላቢዎምን ቁርሶም በሊዖምን ናብ ቤት ትምህርቲ ዝኸዱሉ ሰዓት _____ እዩ።
- ስነ ስርዓት ምስቃል ባንዲራ ዝፍፀመሉ ሰዓት _____ እዩ።
- ትምህርቲ ዝጅመረሉ ሰዓት _____ እዩ።
- ሰዓት ምሳሕ ካብ _____ ክሳብ _____ እዩ።
- ካብ ትምህርቲ ትፍደሱሉ ሰዓት _____ እዩ።

© MOE, FDR
Not to be republished